



Kinetics Controls & Innovation Ltd

KCI has designed and developed a comprehensive range of easy-to-apply specialist coatings for the protection of new or ageing structures and equipment against moisture / corrosion in mild or hazardous environmental or climatic conditions, internal and external, surface and subsea.

MS-PAC – Corrosion Protection Paste

KCI advanced coatings are available in bespoke design or in off the shelf kits, depending on the application.

Overview / Description:

MS-PAC is an easy to apply silicone based PASTE which has been specifically designed and developed for filling flange gaps.

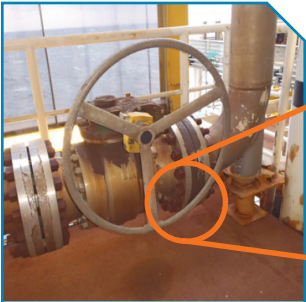
MS-PAC is supplied in an easy to use cartridge for a quick and clean application. This product will provide a filler between flange gaps to prevent the ingress of water and oxygen and will withstand the harshest environmental conditions.

Ideal for:

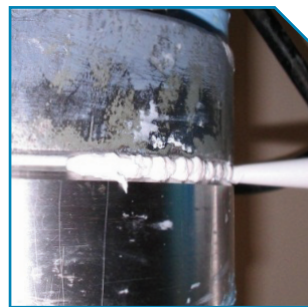
- Wellheads
- Trees
- Pipelines
- Valves
- Restricted access areas

Features and Advantages:

- Extends the life of structures and equipment
- Inert to UV, no shrinkage
- Easy to apply via simple cartridge application
- Prevents ingress of water or oxygen
- No hot work permit required
- Operational temperatures -50°C – 250°C
- Life span of up to 25 years



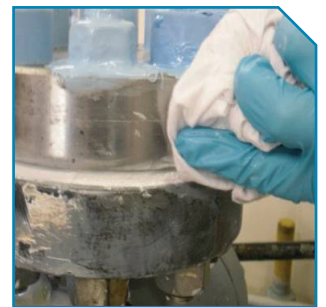
Injection



MS-PAC deployed between Flanges



Form a Recess with Finger



Removing Excess