



Kinetics Controls
& Innovation Ltd

www.kcilttd.co.uk

Subsea Sealant Deployment Skid KCI Engineering Solutions

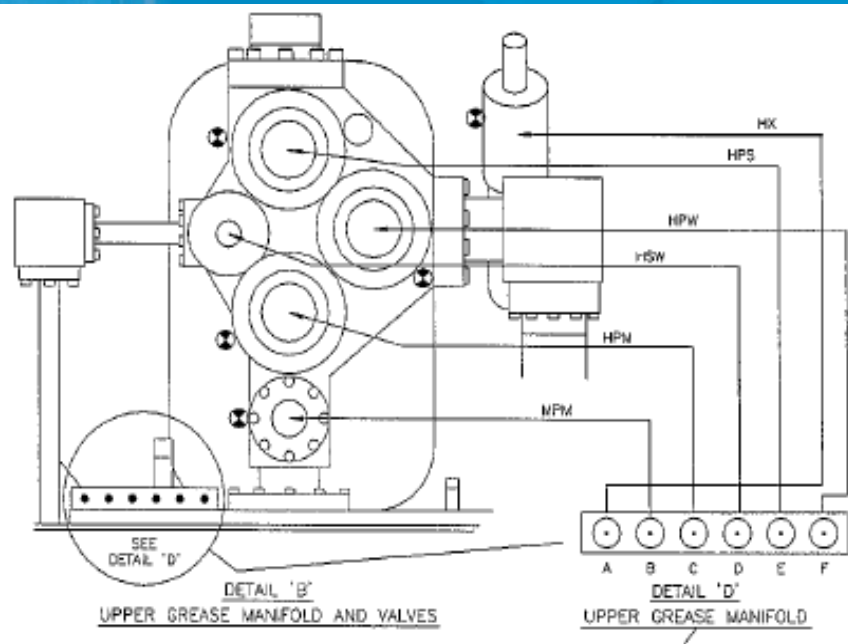


*“Successful Sealant Deployment into UK
Subsea Tree Valves Utilising KCI’s Subsea Skid”*

Inject Tree Valve Lubricant - Subsea

Background

- ❑ KCI were asked by a UK customer to provide an isolation proposal for leaking gate valves on eight Subsea trees in support of future well abandonment operations.
- ❑ All eight wells are in the UK Southern North Sea and will be executed from a DSV (Dive Support Vessel).
- ❑ The proposed operation will include loading KCI's Subsea Skid Deployment cylinders with customer owned tree valve lubricant (grease).
- ❑ The Subsea Skid is configured with 8 x 5 litre Deployment cylinders which will hold and displace 40 litres of tree valve lubricant.



Basic layout of the Subsea Tree
c/w upper grease manifold

Inject Tree Valve Lubricant - Subsea

Deployment Detail



- ❑ The Subsea Skid was loaded with valve lubricant and lowered to the seabed from a DSV.
- ❑ Divers connected the deployment hose to the tree grease manifold.
- ❑ Selected valves were injected with the relevant volume of lubricant.
- ❑ After the lubricant had been deployed, the tree valves were functioned several times and leak off tested – Good tests were reported.
- ❑ The deployment hose was removed and the Subsea Skid was recovered to surface.
- ❑ All tree valves were deemed “Fit for purpose”. Successful isolation.